



Minuet Browser 3.1

(Phone Edition)

User Guide

\$Revision: 1.5 \$

\$Date: 2006/11/03 20:35:02 \$



TriPrince Technology Co.

Table of Contents

Introduction.....	4
Main Features.....	5
Minimum Requirements	5
Quick Tips.....	5
Locked and Unlocked Versions	6
Using Minuet	7
Installing Minuet.....	7
Devices with Built-in Java Support	7
Windows Mobile Devices.....	7
General Controls	8
Accessing Sites	9
QuickList.....	9
Bookmarks	9
Open Screen	10
View Controls	11
Viewing Large Images.....	12
Viewing Click-Sensitive Images.....	13
Auto-Hide Title/Status Bars.....	14
Entering Text	14
Using List Boxes.....	14
Color Schemes and Font Sizes.....	15
Secured Web Access.....	15
Tabs.....	16
Preferences	17
General.....	17
Status	18
Advanced	19
About.....	20
Activate (Locked Version Only).....	20
Appendix A – Minuet Advantages	21

End-to-End Solution	21
Full HTML Support	21
Tab Browsing.....	22
Java Security	22
Built for Speed	22
Appendix B – Default Web Sites.....	23
QuickList.....	23
Business	23
Entertainment.....	23
Info.....	23
News	24
Search.....	24
Shopping	24
Sports	24
Appendix C – Known Issues.....	26
Problems with full screen mode.....	26
Appendix D - Troubleshooting.....	27
OTA does not work.....	27
Internet Access.....	27
Cannot Connect to Some Sites.....	27
Minuet Keeps Asking Me when Downloading Images	27
Cannot Enter Text	27
Web Pages look Different.....	27
Got “Bad Request”or Other Server Errors.....	28
Out of Memory	28
Appendix E – Known APN Settings.....	29

Introduction

Minuet Browser (Phone Edition) is a full-featured, stand-alone HTML browser designed specifically for small mobile phones. It requires no “middle-man” or “hidden” servers. All your inputs and security protection are handled right on your handheld device, safely and efficiently. There are no subscriptions, bottle-necks, and security holes to worry about. With Minuet, you can customize your own web browsing experience, from personalized font sizes and color schemes, to various download options tailored for your networking needs.



Welcome to Minuet!

Main Features

- **[New in V3.1] Enhanced Support for Devices – Minuet is now compatible with many more phone devices that do not support earlier Minuet versions.**
- **[New in V3.1] GZIP Compression – reduce data traffic by up to 90%.**
- Full support for HTML 4.0, including input forms, web log-in and password, and cookies.
- Tab Browsing – move between viewed pages without reloading.
- Advanced Image Viewing – ideal for viewing large images on a smaller screen.
- Bookmark Lists – keep your favorite bookmarks organized.
- Other Convenient Features - reading bar, download byte counter, dynamic memory management, custom user agent string, color schemes, font sizes.

(Minuet does not support JavaScript, Macromedia Flash and video/audio streaming.)

Minimum Requirements

Before you install and run Minuet, please make sure your phone meets all of the follow requirements:

- Support for Java applications (CLDC 1.0, MIDP 2.0).
- 512 Kbytes RAM (1 Mbytes RAM recommended.)
- Full Internet access available.

If you are not sure whether your device meets all of the above requirements, we strongly encourage you to try the Minuet demo version before purchasing Minuet. The demo version is fully functional and can be used to verify that Minuet will work properly on your device.

Quick Tips



Press-and-Hold:

- When viewing a page, try press-and-hold the RETURN key to enlarge/shrink images.

Locked and Unlocked Versions

Minuet is a shareware. You are welcome to try it for 10 days, absolutely free. After that, you will need to purchase an activation code¹ to unlock it. The Locked version has all the features of the Unlocked version except for the following:

- All the bookmarks will be cleared when the Locked version exits and the QuickList will be reset to the 3 default sites.
- The recently opened list of URLs will be cleared when the Locked version exits. (The Unlocked version will save the recently opened URL list.)
- The Locked version will expire after 10 days and will display a ticker tap reminder.

¹ Activation codes can be purchased from <http://www.triprince.com>. We also offer bulk discounts. Please contact info@triprince.com for more information.

Using Minuet

Please read through this user guide before installing and running Minuet, and come back to it if you encounter problems.

Installing Minuet

There are many ways to install Minuet depending on your device. Here we will discuss some common methods. If they do not work with your device, please check with your equipment provider for ways to install and run Java ME applications.

Devices with Built-in Java Support

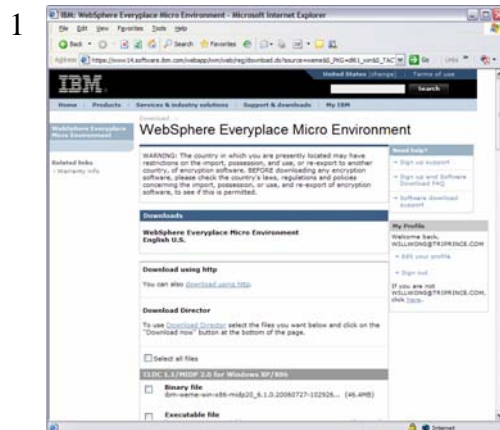
Your mobile device may come with support for installing Java applications. This usually requires a data cable, or a wireless connection to your PC via IrDA (infrared) or Bluetooth. You will need to run a software application on your PC (e.g. PC Suite for Nokia phones.) Please check with your mobile device user guide and your equipment provider for detailed instructions.

Another alternative is to download and install the Minuet demo version from TriPrince web server directly to your mobile device. This is called the OTA (Over the Air) method, and is done by pointing your mobile device's browser at

<http://www.triprince.com/minuet.jad>. Note that this method requires a functioning browser running on your device. Note that some service providers may intentionally disable this feature. Please check with your service provider if you are not sure.

Windows Mobile Devices

Devices running the Windows Mobile OS will need to install a JVM (Java Virtual Machine.) We recommend the J9 JVM from IBM, also called WebSphere Environment Micro Edition. Follow these instructions to install the JVM and Minuet:



Download ibm-weme-wm50-sp-arm-midp20-6.1.0-20060321-073117-918.exe from this site:

https://www14.software.ibm.com/webapp/iwm/web/reg/download.do?pkgid=&S_SRCID=weme&source=weme&S_TACT=104CBW71&S_CMP=&S_PKG=dl61_win&s=<ype=input&l=E_english+U.S.&mtype=input&m=download&id=2006-04-06+13%3A40%3A42.143397R&fam=&cat=&cp=UTF-8

You have to register with IBM, but it's free.

Command Menu



Run the .exe file on your desktop.

Once the file finishes, go into the directory the installer created and unzip:

- weme-wm50-sp-arm-midp20_6.1.0.20060317-111429.zip

- 3 Inside the unzipped folders are subfolders named "bin," "lib," "doc," and "examples" Copy All but "doc" to the Windows Mobile device using Activesync.
- 4 Using the file explorer, Resco Explorer, etc., run "emulator," which is inside the "bin" folder. Run it from your Windows Mobile device.
The program will install. Just keep hitting "yes."
- 5 Once it is installed, copy the MinuetV31x.jad and MinuetV31x.jar files to your Windows Mobile device.
- 6 Run "emulator." It gives you the option to install a Midlet. Choose to install MinuetV31x.jad.

General Controls

On a typical phone device, you can perform most functions with the 5-way cursor keys. You can move the highlight bar with the UP, DOWN, LEFT, RIGHT keys, and select on-screen items by press the CENTER key.



Two soft keys are usually located on both sides of the 5-way cursor keys. One would bring up the menu of additional commands, while the other would display the previous screen.

Command Menu

Accessing Sites

QuickList

You can begin surfing with one of the preloaded sites in the QuickList, as shown below.



Select the site by moving the highlight bar with the cursor keys and then press the RETURN key.

QuickList

Bookmarks

You can also bring up the Bookmark Lists and select a named list of sites.



These bookmark lists can be created and deleted so you can store and organize your favorite sites into different lists.

All the Bookmark Lists

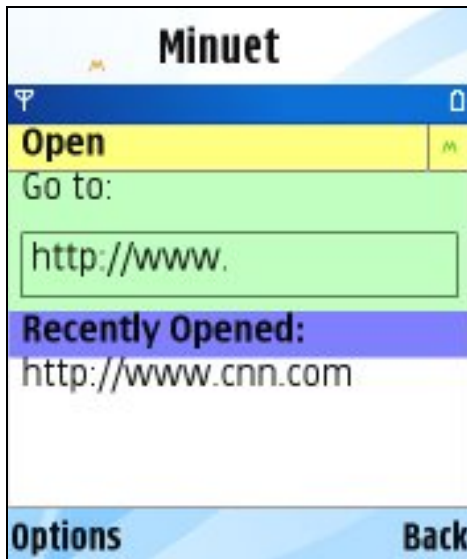


Go into a bookmark list and select a site to open.

Bookmarks in a List

Open Screen

You may also enter the web address by bringing up the “Open” menu.



Open a URL

You can highlight the “Go to:” box to enter the web address. The recently accessed sites are also presented in this menu. You can move the highlight bar downward and hit RETURN to go to one of those addresses.



If you have problems opening a web site, you may need to configure your phone’s networking set-up. See section “Appendix D - Troubleshooting” for more details.

View Controls

Menu and web viewing are controlled by the cursor keys.



Viewing a Web Page

Press the UP/DOWN cursor keys to move the highlight bar and display window up and down. Press the LEFT/RIGHT cursor keys to jump up and down a full page at a time.

To select a web item or a menu command, just move the highlight bar to it and press the CENTER cursor key.



The highlight bar is colored when it is over a selectable item, such as a site in the QuickList or a web link in a web page. If the item is not selectable, the highlight bar becomes gray.

You can go back to the previously viewed web page with the BACK key (if provided) or with the BACK command in the command menu.

Viewing Large Images

Minuet fits large image to the size of the screen.



Viewing a larger-than-screen image is easy. You can use the LEFT, RIGHT, UP, DOWN keys to move the image around. A large image is marked with a small  icon on the upper right corner. A fitted image is marked with a small  icon on upper right corner.

Large Image Fitted to Screen



Large Image at Original Size

You can expand an image to its original size by moving the highlight bar to the image, and then pressing and holding the CENTER key for 1 second. Likewise, you can shrink a large image back to the screen size by holding down the CENTER key again.

Viewing Click-Sensitive Images

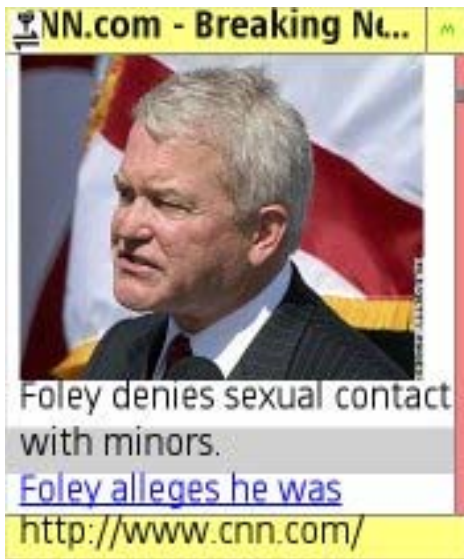
Minuet supports “click-sensitive” image maps where users of PC web browsers can click on various regions of an image to go to different destination web pages.



Click-Sensitive Image

Minuet supports the same function by enclosing a selected region on the image with a dotted line. You can press the LEFT and RIGHT keys to move the selected region around and then press the CENTER key to simulate the “click” on the image.

Auto-Hide Title/Status Bars



Title/Status Bars Shown



Title/Status Bars Hidden

By default, Minuet always displays the title bar (on the top) and the status bar (on the bottom). You can also configure Minuet to automatically hide the title and status bars in the Preferences > General menu.

Entering Text

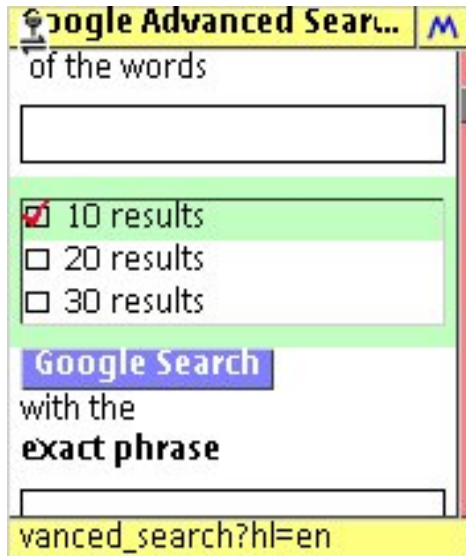
Minuet uses the native input method provided by your device.



You will need to press the RETURN key first before entering text.

Using List Boxes

A list box is an item on the web page that presents a list of choices.



Web Page with List Box

You can select and unselect one or more of these choices. To make your selections, you need to first highlight the list box, and then use the LEFT and RIGHT cursor controls to move the highlight bar within the list box.

Color Schemes and Font Sizes

Minuet supports 6 color schemes and 3 font sizes for you to personalize your viewing experiences. See section “Preferences” for details.

Secured Web Access

Minuet supports access to secured web sites the same way as you would with a PC browser. You may have to enter the web address beginning with the <https://> prefix, or some secure sites will automatic redirect an access to an <http://> address to an <https://> address for you.

Minuet supports a number of HTTPS encryption methods, including the 128-bit encryption and other methods. However, the actual method employed will depend on the secured server, the network link and the device itself.

Tabs

The Tabs screen displays all the web pages that are currently in the tab list.



You can select to view any of the web pages in the list.

Tab Browsing

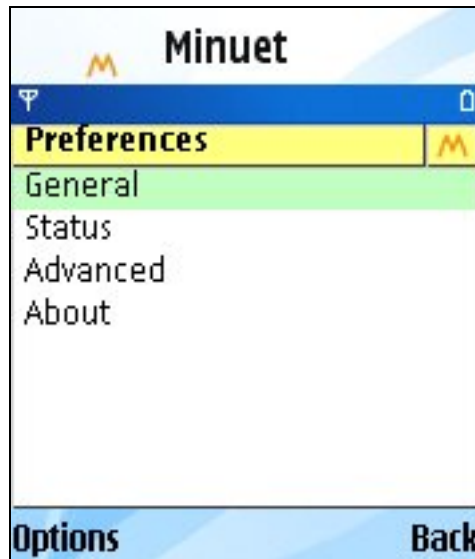


Note that when you move to a new web page with the Open menu, or by clicking a link or an image in a web page, the current web page is automatically stored in the tab list. However, if you move away from a web page by using the Back command, the current web page will NOT be stored up in the tab list.



Moreover, the least recently viewed web pages in the tab list will be freed up (deleted) first when your device runs out of memory.

Preferences



Preferences

Bring up the Preferences screen to change the control settings for Minuet.

General



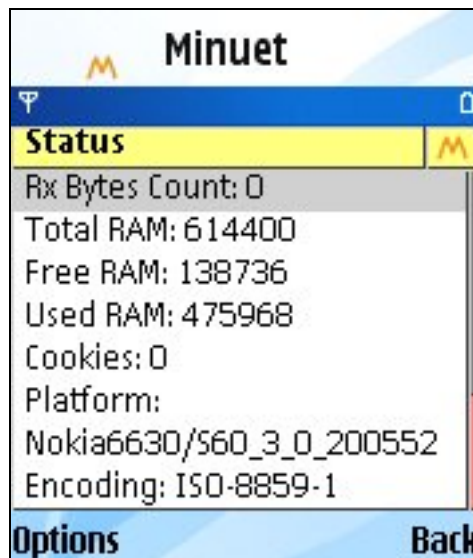
General Preferences

Go into the General preferences menu to make the following configuration changes:

- Set to automatically show and hide the title and status bars (default), or show them always.

- Configure the font size. Note that there are 3 sizes, but some devices do not support all the sizes.
- Configure the color scheme. The 6 choices are:
 - Default
 - Tropical Paradise
 - Box of Chocolate
 - Denim
 - Spice Rack
 - Gray Scale
- Reset all bookmarks to the default set (from Command menu.)
- Reset all the parameters to the default values (from Command menu.)

Status



Status

Go to the Status menu to view the current status of Minuet and your device.

- View and reset the download byte count.
- Total and free RAM.
- View the number of cookies in use and clear all cookies.
- Platform information.

Advanced

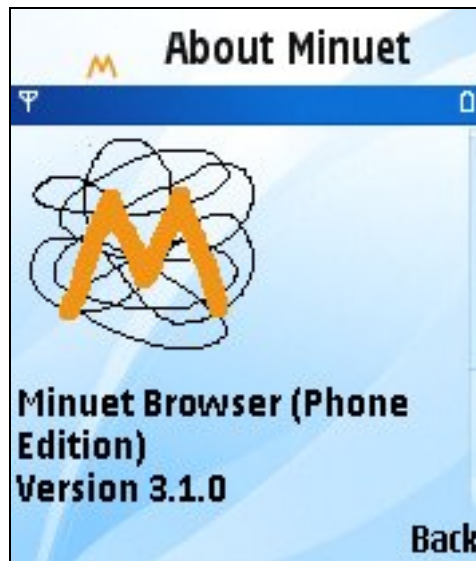


Advanced Preferences

Go to the Preferences > Advanced menu to view and change the advanced Minuet settings:

- Filter out “decorative” images. These are usually images that decorates the web page and not very informative. If you find some images missing from a web page, you can try to disable this feature and reload the page.
- Allow / disallow full screen mode. Some devices have problems when running in full screen mode. Disabling the full screen mode may fix these problems. See section “Problems with full screen mode” for more details.
- Custom user agent string. You can enter a user agent string to make Minuet look like another browser (e.g. Internet Explorer, FireFox, etc.) to the web server.

About



About Minuet

Go to the Preferences > About screen to review the information about Minuet:

- Version
- Technical support contact information

Activate (Locked Version Only)

Go to the Preferences > Activate menu to unlock Minuet. You will need to purchase an activation key from <http://www.triprince.com>. This menu will disappear once Minuet is unlocked.

Appendix A – Minuet Advantages

End-to-End Solution

Minuet is a stand-alone browser. So what does that mean? You may be surprised to know that almost all the web browser solutions for mobile phones involve a so-called “middle-man” server. When you open a web page with these browsers, your web address is sent to a “middle-man” server, which then opens the web page on your behalf. The “middle-man” server then renders (draws) the web page and sends the final picture to your device.

While this off-loads some of the work to the “middle-man” server, the bottleneck is now at this server. Everybody using this browser is getting slowed down, even though they are all trying to get to different web sites. If this server ever goes down, nobody can use their browsers.

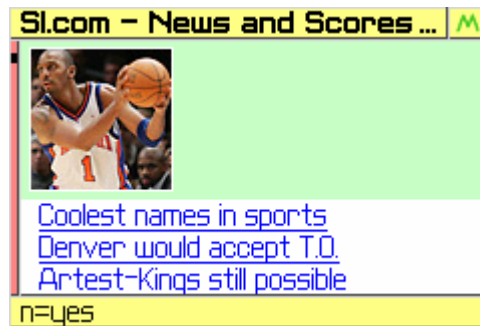
If that is not bad enough, consider this. Everything you enter into a web page, such as your user name, password, account numbers, is first transferred to this server, often without any security protection, before they are sent to the intended web site. That is why these browsers usually do not explicitly state that they rely on “middle-man” servers. Some may say so in fine print, others simply hide this fact.

Minuet, on the other hand, is a fully stand-alone browser, just like your PC browser (e.g. Microsoft Internet Explorer.) There are no “middle-man” servers, and when Minuet is connected to a secured site, your data is fully protected before it leaves your device.

Another advantage of Minuet’s stand-alone solution is that you now have full control over how the web pages look on your device. You can change the look to your taste by changing the font size, color scheme, zooming in and out on images. You can also start reading the web page as soon as the data arrives, and even stop or jump off to a web link before the entire page is loaded, just like your PC browser. You can even load only the text, and then pick and load only those images you want to see.

Full HTML Support

Most browsers for mobile devices today are WAP browsers. WAP is a stripped-down version of web standard. These so-called WAP pages are simple pages designed to be viewed by mobile devices with small screens. The pages usually have very few or no images, and contain much less information than the web pages from the same site.

**WAP Page****Full HTML Page**

Minuet is designed to support full HTML web pages. It can view the same web pages as you would with your PC browsers. Minuet is a testament of our belief that web surfing experience should not be compromised just because you are doing it with a smaller screen. In fact, it should be enhanced because now you can access your favorite web sites anywhere and anytime.

Tab Browsing

Minuet is the only mobile web browser that lets you view one web page while downloading another. No more constant waiting for web page to reload when you switch between pages.

Java Security

Minuet offers secured HTTPS end-to-end web access based on the Java platform. You can rest assured that your data and activities are fully protected. Now you can access your secured accounts the same way as with a PC, and you can do it anywhere and any time.

Built for Speed

Minuet runs only on mobile devices. It is designed from ground up to be compact and fast. This is not true for most handheld browsers, which are really PC browsers that got shoe-horned into small mobile phones. They are therefore big and slow, and cannot deliver the performance needed for small devices.

Appendix B – Default Web Sites

QuickList

"Google" - "http://www.google.com"

"CNN" - "http://www.cnn.com"

"Yahoo Finance" - "http://finance.yahoo.com"

"BBC News" - "http://news.bbc.co.uk/text_only.stm"

"CBC News" - "http://www.cbc.ca"

"Time (Mobile)" - "http://mobile.time.com"

"Business Week (Mobile)" - "http://businessweek.mobi"

Business

"Yahoo Finance" - "http://finance.yahoo.com"

"CNN Money" - "http://money.cnn.com"

"MSN MoneyCentral" - "http://moneycentral.msn.com"

"Fortune" - "http://www.fortune.com/fortune"

"Wall Street Journal" - "http://online.wsj.com"

"Business Week" - "http://www.businessweek.com"

Entertainment

"E!online" - "http://www.eonline.com"

"Yahoo TV" - "http://tv.yahoo.com"

"TV Guide" - "http://www.tvguide.com"

"Movies.com" - "http://movies.go.com"

"Billboard" - "http://www.billboard.com"

"MTV" - "http://www.mtv.com"

"The Hollywood Reporter" - "http://www.hollywoodreporter.com"

Info

"Intellicast Weather" - "http://www.intellicast.com"

"Traffic.com" - "http://www.traffic.com"

"Restaurants.com" - "http://www.restaurants.com"

"Dictionary.com" - "http://www.dictionary.com"

News

"CNN" - "<http://www.cnn.com>"
"AOL News" - "<http://news.channel.aol.com>"
"USA Today" - "<http://www.usatoday.com>"
"Google News" - "<http://news.google.com>"
"NY Times" - "<http://nytimes.com>"
"ABC News" - "<http://www.abcnews.com>"
"Washington Post" - "<http://www.washingtonpost.com>"
"Fox News" - "<http://www.foxnews.com>"
"Yahoo News" - "<http://news.yahoo.com>"
"CSPAN" - "<http://www.c-span.org>"
"BBC News" - "http://news.bbc.co.uk/text_only.stm"
"CBC News" - "<http://www.cbc.ca>"
"Time" - "<http://www.time.com>"

Search

"Google" - "<http://www.google.com>"
"Yahoo" - "<http://www.yahoo.com>"
"Go" - "<http://www.go.com>"
"Web Crawler" - "<http://www.webcrawler.com>"
"Hot Bot" - "<http://www.hotbot.com>"

Shopping

"Amazon" - "<http://www.amazon.com>"
"CNET" - "<http://www.cnet.com>"
"EBay" - "<http://www.ebay.com>"
"Best Buy" - "<http://www.bestbuy.com>"

Sports

"ESPN" - "<http://espn.go.com>"
"Sports Illustrated" - "<http://sportsillustrated.cnn.com>"
"NFL" - "<http://www.nfl.com>"
"The Sports Network" - "<http://www.sportsnetwork.com>"

“Sports Central” - "<http://www.sports-central.org>"

“Rivals.com” - "<http://www.rivals.com>"

“Our Sports Central” - "<http://www.oursportscentral.com>"

Appendix C – Known Issues

Problems with full screen mode

By default, Minuet uses the entire screen area to display web pages. However, some phone models does not handle full screen mode properly. For example, the Nokia 6600 ignores all command inputs in full screen mode, making it impossible to get out of a web page screen. Other devices have problems reporting the screen size correctly in when full screen mode, resulting in funny layout of screen objects.

If you are having similar problems on your phone, you should disable full screen mode in the Preferences > Advanced menu. For Nokia, the title area will remain visible when viewing web pages, resulting in a slightly small display area.

Appendix D - Troubleshooting

OTA does not work

Some service providers intentionally disable the OTA service. In that case what you will see is a page of information about Minuet but no “Download” button. If that is the case, please check with your service provider for possible ways around the problem.

Internet Access

Minuet requires access to the Internet via an IP gateway. If your phone supports HTTP over WAP, then Minuet can access the Internet via a WAP gateway as well. Please check with your equipment and service provider for details regarding access to the Internet.

Cannot Connect to Some Sites

There are few cases when our users can connect to some sites but not others, because their service providers choose to block out access to those sites. The reasons behind that are often marketing and not technical in nature. If you encounter such problems, please contact your service provider. You are entitled to access the entire Internet if you have paid for Internet access, but you need to assert your rights.

Minuet Keeps Asking Me when Downloading Images

Many phones are pre-configured to ask the user for permission to use the network for each and every access. The number of confirmations can become excessive when viewing web pages with a lot of images, because each image requires a separate network access. You can usually cut down the number of confirmations by setting the phone to ask only once with the first access. Check you phone manual for the proper procedures.

Cannot Enter Text

Make sure you select the input field and then press the CENTER key to bring up the text input screen.

Web Pages look Different

Most web pages are designed to be displayed on big PC screens, while Minuet runs on devices with a very small screen. So you will find that some web pages look different because Minuet has to rearrange the page to fit all the web items on the small screen. Minuet also filters out unnecessary text and graphics to enhance the download speed and the display.

Another possible reason for the different looks is that many web pages contain some JavaScript, which is not supported by Minuet. While most of these web pages can still be displayed correctly by Minuet, occasionally you may find some web pages that rely

heavily on JavaScript, to a point where a lot of items are missing from the page. We do not recommend viewing these web pages with Minuet.

Got “Bad Request” or Other Server Errors

Some web servers respond differently to different web browsers by reading the User Agent in the client request. However, some do not respond nicely to browsers that they have no knowledge of (e.g. Minuet.) In that case, you may get a Bad Request response from the server.

One way to get around that problem is to make Minuet look like a well-known browser to the server. Some common user agent strings are:

IE 6.0 on XP:

Mozilla/4.0 (compatible; MSIE 6.0; Windows NT 5.1)

Firefox on Windows XP:

Mozilla/5.0 (Windows; U; Windows NT 5.1; en-US; rv:1.8) Gecko/20060319
Firefox/2.0a1

Konqueror running on Linux:

Mozilla/5.0 (compatible; Konqueror/3.1; Linux 2.4.22; X11; i686; en_US, en)

Out of Memory

Each web page consists of up to a few hundred kilobytes (Kbytes) of text and images. Depending on the amount of free RAM available on the device, Minuet may run out of memory after extended viewing and caching of many web pages.

If Minuet runs out of free memory, it will attempt to delete the oldest of the previously viewed web pages and repeat the attempt to load the page again. If the attempt fails again, Minuet will display an alert. At that point, you should close down Minuet and then try again. You can also check the amount of free memory available on the device in the Preferences > Status menu.

Appendix E – Known APN Settings

Minuet contains built-in help information for setting up the APNs for popular North American server providers. The following are some known APN settings for service providers outside of North America. Please note that these settings do change over time and without notice. So please check with your service provider for the correct settings.

Country	Mobile operator	Access point name / User Name / Password
Argentina	Personal	gprs.personal.com
Argentina	Unifon	internet.gprs.unifon.com.ar
Australia	Telstra	telstra.internet
Australia	Optus	internet
Australia	Three	3netaccess
Australia	Vodafone	internet
Austria	Max Online	gprsinternet
Austria	One	wap.one.at
Belgium	Orange	orangeinternet
Belgium	Mobistar	web.pro.be
Belgium	Proximus	internet.proximus.be
Bermuda	AT&T	proxy
Bermuda	Mobility	net.bm
Brazil	Claro	claro.com.br
Brazil	Oi	gprs.oi.com.br
Brazil	TIM	tim.br
Bulgaria	Mobitel (Mtel)	inet-gprs.mtel.bg
Canada	Fido	internet.fido.ca

Country	Mobile operator	Access point name / User Name / Password
Canada	Rogers AT&T	internet.com / wapuser1 / wap
Chile	Entel PCS	imovil.entelpcs.cl bam.entelpcs.cl
Chile	Telefonica GSM	web.tmovil.cl
China	China Mobile	cmnet
Croatia	VIPNET	gprs.vipnet.hr
Czech Republic	Eurotel	internet
Czech Republic	Oskar	internet
Czech Republic	Oskar prepaid cards	ointernet
Czech Republic	T-Mobile	internet.t-mobile.cz
Denmark	TDCmobil	internet
Denmark	Orange	web.orange.dk
Egypt	Vodafone	internet.vodafone.net
Dominican Republic	Orange Dominicana	orangenet.com.do
Finland	Telia Mobile	internet
Finland	DNA	internet
Finland	Sonera	internet
Finland	Radiolinja	internet
Finland	Saunalahti	saunalahti

Country	Mobile operator	Access point name / User Name / Password
France	Orange	orange.fr
France	SFR	websfr
France	Bouygues Telecom	eBouygTel.com
Germany	D2 Vodafone	web.vodafone.de
Germany	E-Plus	internet.eplus.de
Germany	O2	internet
Germany	Quam	quam.de
Germany	T-Mobile D1	internet.t-d1.de
Greece	Vodafone	internet.vodafone.gr
Greece	Telestet	gint.b-online.gr
Greece	Cosmote	internet
Hungary	Vodafone (Prepaid "Optimized")	vitamax.internet.vodafone.net
Hungary	Vodafone (Prepaid "Standard")	vitamax.snet.vodafone.net
Hungary	Vodafone (Postpaid "Optimized")	internet.vodafone.net
Hungary	Vodafone (Postpaid "Standard")	standardnet.vodafone.net
Hong Kong	CSL	internet
Hong Kong	Orange	web.orangehk.com
Hong Kong	New World	internet
Hong Kong	People	internet

Country	Mobile operator	Access point name / User Name / Password
Hong Kong	SmarTone	internet
Hong Kong	Sunday	internet
India	Orange, Hutch	www
Iceland	Siminn	gprs.simi.is
India	BPL Mobile	bplgprs.com
India	Airtel	airtelgprs.com
Indonesia	Telkomsel	internet
Ireland	O2	internet
Ireland	Vodafone	live.vodafone.com
Israel	Cellcom	internetg
Israel	Orange	internet
Italy	TIM	uni.tim.it ibox.tim.it
Italy	Vodafone Omnitel	web.omnitel.it
Italy	Wind	internet.wind
Latvia	Latvia Mobile Telefone	internet.lmt.lv
Luxembourg	LUXGSM	web.pt.lu
Luxembourg	Tango	internet
Malaysia	Celcom	celcom.net.my
Mexico	Movistar	internet.movistar.mx
Mexico	Telcel	internet.itelcel.com

Country	Mobile operator	Access point name / User Name / Password
Montenegro	Monet	gprs.monetcg.com
Netherlands	T-Mobile	internet
Netherlands	KPM Mobile	internet
Netherlands	Orange	internet
Netherlands	O2	internet
Netherlands	Vodafone (normal)	web.vodafone.nl
Netherlands	Vodafone (business)	office.vodafone.nl
New Zealand	Vodafone NZ	www.vodafone.net.nz
Norway	Netcom	internet.netcom.no
Norway	Telenor	internet
Pakistan	UFone	ufone.internet
Paraguay	Personal	internet
Paraguay	Tigo	internet.tigo.py
Philippines	Smart	internet
Philippines	Globe	internet.globe.com.ph
Poland	Era	erainternet
Poland	Idea	www.idea.pl
Poland	PlusGSM	www.plusgsm.pl
Portugal	Optimus	internet
Portugal	TMN	internet
Portugal	Vodafone (Telcel)	internet.vodafone.pt

Country	Mobile operator	Access point name / User Name / Password
Romania	Connex	internet.connex.ro
Romania	Orange	internet
Russia	BeeLine	internet.beeline.ru
Russia	Megafon	internet.nw
Russia	MTS	internet.mts.ru
Russia	PrimTel	internet.primtel.ru
Saudi Arabia	Saudi Telecom	Jawalnet.com.sa
Serbia-Montenegro	Mobtel Srbija	internet
Serbia-Montenegro	Telekom Srbija	gprsinternet
Singapore	M1	sunsurf
Singapore	Singtel	internet
Singapore	Starhub	shwapint
Slovakia	Eurotel	internet
Slovakia	Orange	internet
South Africa	MTN	internet
Spain	Amena	amenawap
Spain	Telefonica (Movistar)	movistar.es
Spain	Vodafone	airtelnet
Sweden	Telia	online.telia.se
Sweden	Vodafone SE	internet.vodafone.net

Country	Mobile operator	Access point name / User Name / Password
Switzerland	Swisscom	gprs.swisscom.ch
Switzerland	Orange CH	internet
Switzerland	sunrise	internet
Switzerland	UMC	www.umc.ua
Taiwan	Chunghwa Telecom	internet
Taiwan	Far EasTone	fetnet01
Taiwan	KG Telecom	internet
Taiwan	Taiwan Cellular	internet
Thailand	AIS	internet
Thailand	DTAC	www.dtac.co.th
Turkey	Avea	internet
Turkey	Aycell	aycell
Turkey	Telsim	telsim
Turkey	Turkcell	internet
UK	Jersey Telecom	pepper
UK	O2	mobile.o2.co.uk
UK	T-Mobile	general.t-mobile.co.uk
UK	Vodafone UK	internet
UK	Orange	orangeinternet
Ukraine	Kyivstar GSM	www.kyivstar.net
Ukraine	UMC	www.umc.ua

Country	Mobile operator	Access point name / User Name / Password
USA	T-Mobile	internet2.voicestream.com
USA	AT&T	proxy
USA	Cingular	isp.cingular / WAP@CINGULARGPRS.COM / CINGULAR1
USA	Cincinnati Bell	wap.gocbw.com / cbw / (blank)
Venezuela	Digital TIM	gprsweb.digitel.ve
Vietnam	MobiFone	Mobi-gprs-wap